

When Seeding, Overseeding, Sprigging, Sodding and Hydroseeding...

...you need moisture twenty-four hours a day, seven days a week in order to be successful. Even the most diligent of superintendents or greencare professionals has neither the time nor the resources needed to maintain optimum moisture levels throughout the day.

Hydretain® can help. Its unique ability to efficiently manage moisture between scheduled waterings protects projects from drying out - especially when constant watering is either impractical or labor intensive.

Hydretain's patented hygroscopic and humectant technology has proven to improve seed germination and seedling survival in restricted water germination testing and has been an integral part of major turf establishment and erosion control projects worldwide.

Think

What is Hydretain ES Plus?

Hydretain® ES Plus from Ecologel is a proprietary blend of patented hygroscopic and humectant technology combined with an advanced, naturally-derived soil surfactant, designed to manage soil moisture, minimize drought stress and effectively reduce watering requirements for seed germination and healthy plant growth.

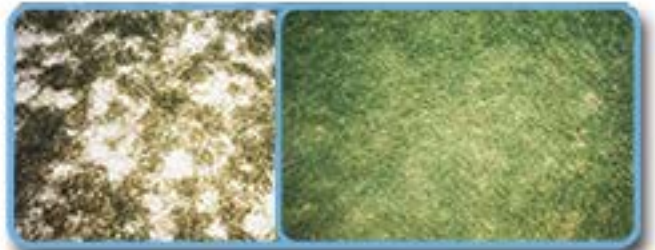
Hydretain ES Plus attracts free water molecules like tiny water magnets, converting them into microscopic droplets, accelerating seed hydration and resulting in improved germination rates as well as faster establishment of seedlings, sod and sprigs.



Control



Hydretain



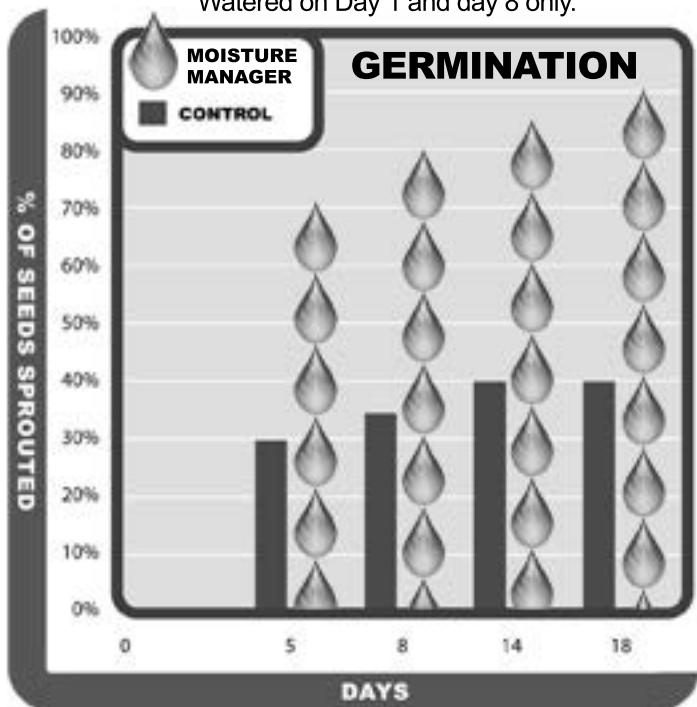
Hydretain ES Plus will also maximize your watering efficiency for established turf and ornamental plants, minimize local dry spots and speed up turf repair. Best of all, Hydretain ES Plus is an easily applied liquid that is biodegradable and can be tank mixed. One application last up to three months.


Hydretain™
ROOT ZONE MOISTURE MANAGER

Increase Germination

Moisture Manager's hygroscopic and humectant technology has proven to increase germination in restricted water environments by over 100%. Moisture Manager also increases survivability by keeping developing seedlings moist.

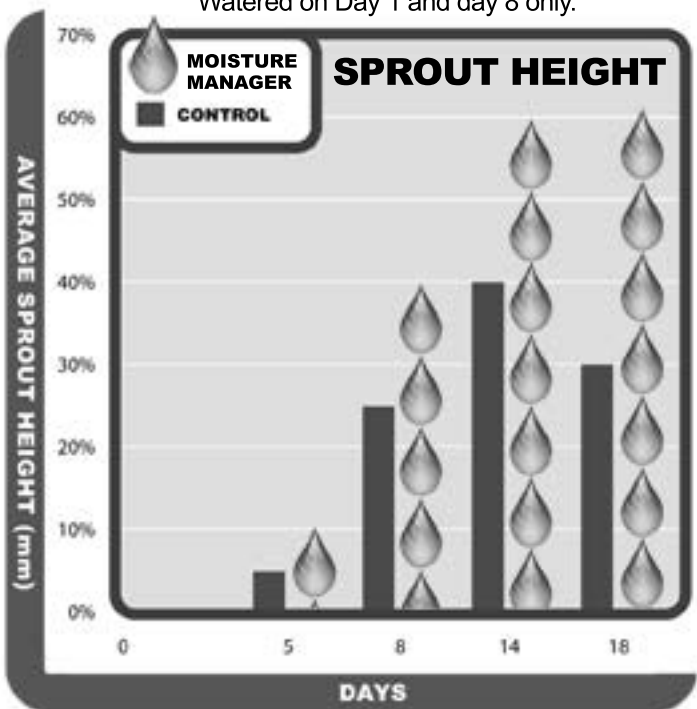
Watered on Day 1 and day 8 only.



Faster Establishment

Moisture Manager utilizes moisture in the atmosphere and slows evaporation of applied moisture to increase watering efficiency. Establishment of new turf and root growth are thus enhanced by keeping more water available for the developing roots of seedlings, sprigs and sod.

Watered on Day 1 and day 8 only.



Description:

Moisture Manager is a unique liquid blend of patented hygroscopic and humectant technology combined with an advanced, naturally derived, non-ionic wetting agent for improved penetration and performance. In combination these technologies provide unequalled water conservation and drought stress reduction through efficient subsurface soil moisture management. In addition to reducing your overall watering requirements, Moisture Manager works to provide the proper soil moisture needed to maximize the effectiveness of most plant production and maintenance products.

How Moisture Manager Works

Sprayed or drenched into soil around all types of seed, turf, trees, shrubs and bedding plants, Moisture Manager forms a subsurface film which attracts and stores moisture as microscopic droplets on plant roots and soil particle surfaces. The droplets are drawn into the roots while the Moisture Manager remains in place extracting additional moisture from vapor in the soil matrix. Moisture Manager converts this otherwise unavailable soil moisture into usable water droplets, reducing overall watering while eliminating or minimizing plant wilt cycles and drought stress.

Managing soil moisture with Moisture Manager improves:

Seed Germination • Seedling Survival • Sod and Sprigging Establishment • Transplant Rates for Ornamental Plants, Shrubs & Trees

Moisture Manager controls localized dry spots which can minimize or eliminate hand watering while reducing the overall watering requirement.

Application

Moisture Manager is easily applied by spray or drench and may be tank mixed or injected into fertigation systems. Each application lasts up to 3 months.

- Seeding, Overseeding, Sodding and Sprigging: Apply 9 ounces per 1,000 square feet / 3 gallons per acre.
- Ornamental Plants, Shrubs and Trees: Dilute 2 ounces of Moisture Manager per gallon of water and drench the entire root area of each plant.
- Reapply every 3 months or apply 1/3 rate monthly booster applications after initial full rate application.

LESCO

1301 East 9th Street • Suite 1300 Cleveland, OH 44114

1-800-321-5325 • For Additional Information Visit

www.moisturemanager.com